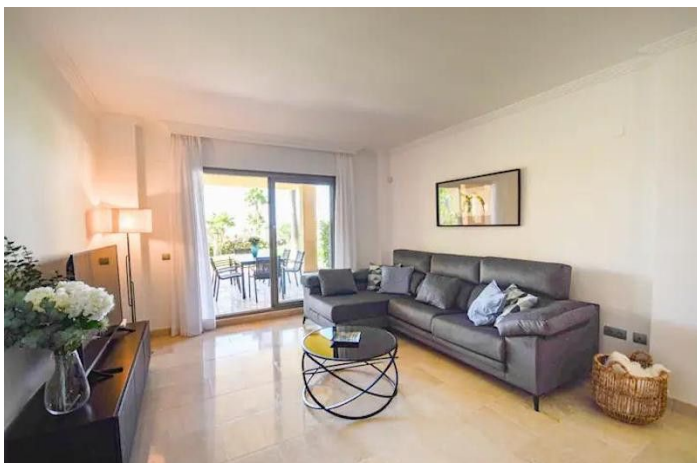




Middle Floor Apartment for rent in Benahavís, Benahavís

2,300 - 2,300 €

Reference: R4872292 Bedrooms: 2 Bathrooms: 3 Plot Size: 181m² Build Size: 181m² Terrace: 40m²





Costa del Sol, Benahavís

Apartment in the urbanization Hacienda Cifuentes, Benahavís, very close to golf courses such as PG Golf & Sports Academy Atalaya, Villa Padierna Golf or Marbella Club Golf Resort.

The house has an impressive terrace and is only 10 minutes drive from Puerto Banús and 20 minutes from Marbella.

The house is distributed over one floor and consists of living-dining room, fully fitted kitchen, 2 bedrooms, 2 bathrooms, terrace, garden and parking space.

The living-dining room consists of a chaise longue sofa, coffee table and smart TV, the dining room has been equipped with a dining table for 6 people.

The kitchen is fully equipped with all appliances such as fridge, oven, washing machine, kettle, toaster and coffee machine. There are also all kinds of kitchen utensils such as cutlery, glassware, crockery and cookware.

The master bedroom en suite has a double bed and direct access to the terrace, the bathroom is equipped with a bathtub and double washbasin. The guest bedroom has 2 single beds. Both bedrooms have fitted wardrobes. The second bathroom has a washbasin and shower.

The spacious terrace consists of two areas, a chill out area with its sofa, two armchairs and central table and a dining area with outdoor table and 6 chairs. From the terrace you can enjoy the communal garden and the magnificent views.

In the house you will find wifi, air conditioning, bed linen and bath towels so you don't have to worry about anything.

The urbanization has 4 communal outdoor swimming pools, one of them is an infinity pool and is heated all year round



Features:

Features

Ensuite Bathroom

Views

Garden

Pool

Pool

Communal

Heated

Security

Gated Complex

24 Hour Security

Energy Rating

C

Orientation

North East

Setting

Close To Golf

Close To Shops

Close To Town

Frontline Golf

Furniture

Fully Furnished

Parking

Private

CO2 Emission Rating

D

Climate Control

Air Conditioning

Condition

Good

Excellent

Garden

Communal

Category

Golf