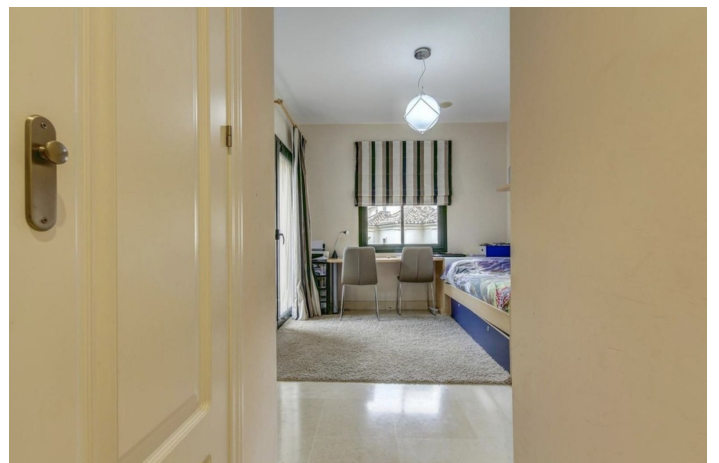




## Middle Floor Apartment for rent in Benahavís, Benahavís

3,500 - 3,500 €

Reference: R3846808   Bedrooms: 3   Bathrooms: 3   Build Size: 250m<sup>2</sup>   Terrace: 45m<sup>2</sup>





## Costa del Sol, Benahavís

Lovely 3 bed apartment in \_Capanes\_del\_golf. This spacious apartment is located on the second floor of a quiet block within the development. It has three bedrooms all ensuite. The kitchen lounge and master bedroom open out onto a spacious terrace which gets all the afternoon sun and has views to the surrounding nature. The other two bedrooms have their own private terraces. Without question, Capanes del Golf is among the best developments in the area. Surrounded by the El Higueral golf course, owned by the prestigious Marbella Club, the development consists of 267 apartments set within 50,000 sq. m of carefully manicured gardens. The property also has 2 parking spaces and a storage room. Very private community with 24 hours surveillance and CCTV cameras.



## Features:

### Features

Covered Terrace  
Near Transport  
Private Terrace  
Storage Room  
Marble Flooring  
Double Glazing  
24 Hour Reception  
Fitted Wardrobes  
Solarium  
Gym  
Sauna  
Utility Room  
Barbeque  
Fiber Optic

### Views

Mountain  
Panoramic  
Country  
Garden  
Pool  
Golf  
Lake

### Pool

Communal  
Heated  
Indoor  
Children`s Pool

### Garden

Communal  
Landscaped

### Utilities

Electricity

### Orientation

West

### Setting

Close To Golf  
Urbanisation  
Close To Shops  
Close To Town  
Close To Schools  
Frontline Golf  
Town  
Close To Forest  
Close To Marina

### Furniture

Fully Furnished

### Security

Gated Complex  
24 Hour Security  
Alarm System  
Electric Blinds  
Entry Phone  
Safe

### Category

Holiday Homes  
Investment  
Distressed  
Golf  
Resale  
Contemporary

### Climate Control

Air Conditioning  
Cold A/C  
Hot A/C  
U/F/H Bathrooms

### Condition

Excellent

### Kitchen

Fully Fitted

### Parking

Underground  
Garage  
Private  
Covered  
More Than One