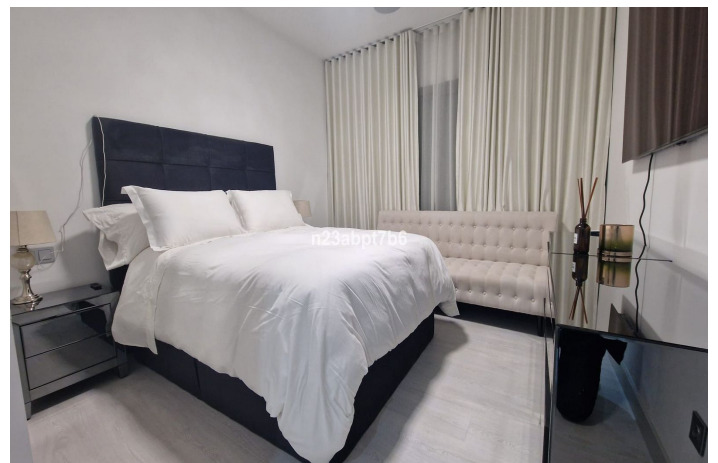




Ground Floor Apartment for sale in Estepona, Estepona

559,000 €

Reference: R5113768 Bedrooms: 2 Bathrooms: 2 Build Size: 157m² Terrace: 28m²





Costa del Sol, Estepona

Discover this beautifully presented ground floor apartment, offering the perfect blend of space, comfort, and prime location. The property features a generous open-plan living and dining area that opens seamlessly onto a sun-drenched southwest-facing terrace and private garden—ideal for relaxing or entertaining in style. With two well-appointed bedrooms and two modern bathrooms, this home is designed for comfortable living. The spacious master suite boasts an en-suite bathroom and direct access to the terrace, creating a tranquil retreat filled with natural light. The fully fitted kitchen includes a separate laundry area and is equipped with everything you need for easy, everyday living. Additional features include air conditioning (hot and cold) and luxurious underfloor heating in the bathrooms. Located in the prestigious gated community of Benatalaya, residents enjoy top-tier amenities including: 24-hour security Lush landscaped gardens Multiple outdoor swimming pools Heated indoor pool Fully equipped gym Sauna and spa facilities Ideally situated just 10 minutes from Puerto Banús, 15 minutes from Marbella and Estepona, and 50 minutes from Málaga Airport. You'll also find shops, restaurants, golf courses, and beaches just moments away. Whether you're looking for a permanent home, a holiday getaway, or a smart investment, this property offers the perfect combination of quality, convenience, and lifestyle. A true gem on the Costa del Sol—schedule your viewing today!



Features:

Features

Covered Terrace
Lift
Private Terrace
Double Glazing
Fitted Wardrobes
Utility Room

Views

Garden

Pool

Communal

Garden

Private

Orientation

South West

Setting

Close To Shops
Close To Schools

Furniture

Fully Furnished

Security

Gated Complex
24 Hour Security

Climate Control

Air Conditioning

Condition

Excellent

Kitchen

Partially Fitted

Parking

Communal