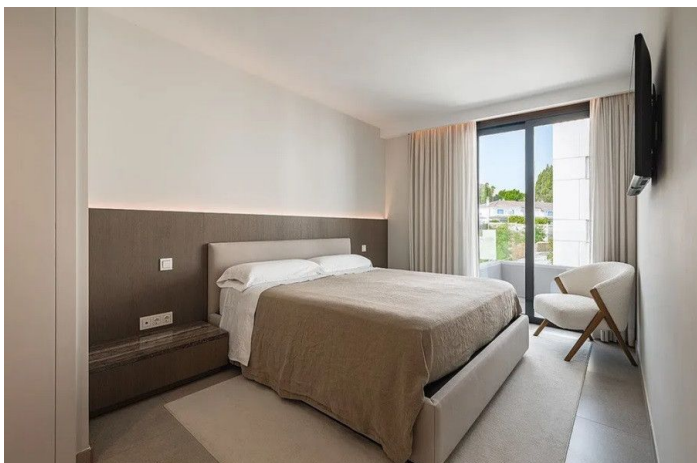




Penthouse for sale in San Pedro de Alc ntara, Marbella

995,000  

Reference: R5148298 Bedrooms: 4 Bathrooms: 4 Build Size: 323m² Terrace: 180m²





Costa del Sol, San Pedro de Alcántara

Located in a recently built development, in a prime position just steps from the center of San Pedro de Alcántara, this elegant penthouse combines modern design, comfort, and an unbeatable location, surrounded by all amenities: charming cafés, supermarkets, pharmacies, and schools. The property features a bright open-plan living and dining area with a fully fitted kitchen equipped with Whirlpool appliances, opening directly onto a covered terrace – perfect for enjoying breakfast or relaxed dinners outdoors. It offers 4 spacious bedrooms and 3 full bathrooms, plus a guest toilet that adds extra convenience for visitors. The highlight of this home is its spectacular 150 m² private solarium, boasting panoramic views of La Concha mountain. With its jacuzzi and barbecue area, it becomes the perfect space for family gatherings, entertaining guests, or simply enjoying the Mediterranean sun all year round. Key features include: Porcelain stoneware flooring Large windows with solar control and thermal & acoustic insulation Built-in wardrobes LED lighting Aerothermal system for air conditioning and hot water In addition, the property includes 2 parking spaces and a storage room in the underground garage of the community. A unique opportunity for those seeking an exclusive, modern home with all comforts, in one of the most sought-after areas of the Costa del Sol.



Features:

Features

Covered Terrace
Lift
Near Transport
Private Terrace
Ensuite Bathroom
Double Glazing
Fitted Wardrobes
Solarium
Guest Apartment
Utility Room
Jacuzzi
Fiber Optic

Views

Mountain
Panoramic

Pool

Communal

Garden

Communal

Utilities

Telephone

Orientation

South

Setting

Close To Golf
Close To Sea
Close To Shops
Close To Town
Close To Schools

Furniture

Fully Furnished

Security

Gated Complex

Category

Luxury

Climate Control

Air Conditioning

Condition

Excellent

Kitchen

Partially Fitted
Kitchen-Lounge

Parking

Communal
More Than One