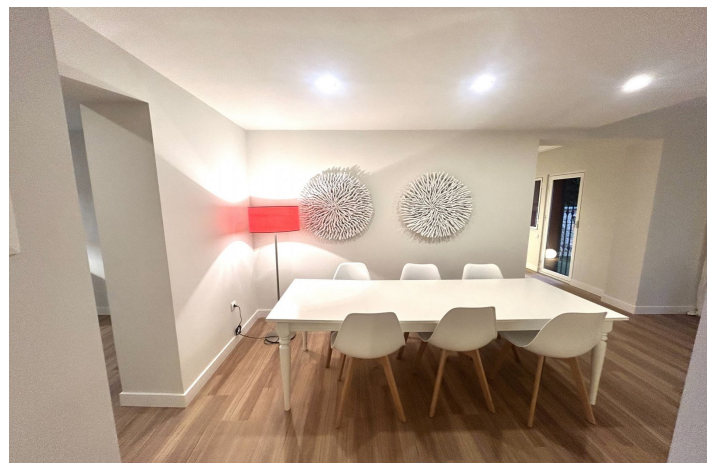




## Semi-Detached House for sale in Atalaya, Estepona

**690,000 €**

Reference: R5251573   Bedrooms: 4   Bathrooms: 3   Plot Size: 250m<sup>2</sup>   Build Size: 285m<sup>2</sup>   Terrace: 100m<sup>2</sup>





## Costa del Sol, Atalaya

Large house ready to go in to live; From the beautiful front garden and through a stone staircase you access the entrance of the house open to a large living room with fireplace that has plenty of light all day as it is south orientation; on this floor there is also a separate kitchen, with small dining room, that gives the access garden, a guest toilet and a small extra room perfect for office, or for room to play, from which you pass to the private garage covered with The house is the Lomas de Monte Biarritz one of the most beautiful and well-kept urbanizations in the area; On the first floor there are 3 bedrooms, the master with en-suite bathroom, closet area and access to two terraces one of them huge solarium type; , the other two rooms also have fitted wardrobes and share another bathroom; the house has a more attic floor where a small room is located with a large terrace that enjoys wide views. The house has recently been completely renovated by architects; so this list to enter to live and by its orientation, has a lot of light all day; the community is very well maintained and managed. It has large and beautiful gardens and 2 swimming pools, one of adults and another of children; It is a perfect house for families with children, since there is a lot of atmosphere; and it is perfect for living all year round; since it is next to all services: The Guadalmina Shopping Centre also the Atalaya and San José schools in Guadalmina are next to it; Call us and we teach you!!



## Features:

### Features

Covered Terrace  
Near Transport  
Private Terrace  
Marble Flooring  
Double Glazing  
Fitted Wardrobes  
Solarium  
Games Room  
Utility Room  
Wood Flooring

### Views

Panoramic  
Country  
Garden  
Pool

### Pool

Communal

### Garden

Private

### Orientation

South

### Setting

Close To Golf  
Close To Port  
Close To Sea  
Close To Shops  
Close To Town  
Close To Schools

### Furniture

Not Furnished

### Security

Gated Complex  
Electric Blinds

### Climate Control

Fireplace

### Condition

Good  
Excellent  
Recently Renovated  
New Construction

### Kitchen

Partially Fitted

### Parking

Private