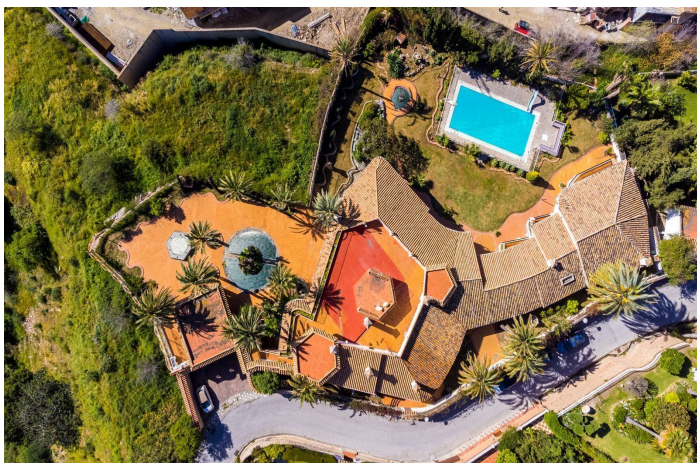




Detached Villa for sale in Torremuelle, Benalmádena

2,999,000 €

Reference: R5272090 Bedrooms: 9 Bathrooms: 8 Plot Size: 3,213m² Build Size: 1,146m²





Costa del Sol, Torremuelle

Welcome to an extraordinary opportunity to own a magnificent mansion in the heart of Torremuelle, Costa del Sol. Spanning an impressive 1,146 square meters of luxurious living space, set on a vast 3,077 square meter plot, this estate offers a lifestyle of unparalleled comfort and breathtaking views. As you enter the grand hallway, you are immediately greeted by panoramic views of the sparkling sea and majestic mountains that surround this exclusive property. To your left, you'll find two expansive living rooms, each featuring a stunning marble fireplace, offering a sophisticated and inviting atmosphere perfect for both relaxation and entertainment. The home boasts two massive kitchens, ideal for culinary enthusiasts, along with two spacious store rooms and a formal dining room designed for lavish gatherings. The thoughtful layout continues with a unique, smaller round room adorned with stone seating and a table – a cozy space to unwind and enjoy the tranquility of your surroundings. To the right of the entrance, a hallway of fitted wardrobes ensures ample storage, while the first of the bedrooms features fitted wardrobes, an en-suite bathroom with a shower, and a private terrace. The master suite is a true sanctuary, complete with its own TV room and two additional terraces for even more spectacular views. Two luxurious bathrooms with both bath and shower facilities add to the opulence of this residence. Descending the stairs from the entrance hallway, you enter another inviting sitting area. On the left, you'll find three generously sized double bedrooms, one of which includes an en-suite bathroom with a shower. A separate bathroom with a shower is also located along the hallway. To the right of the sitting area, two more large bedrooms, both with en-suite bathrooms, await, providing privacy and comfort. All bedrooms come equipped with air conditioning, ensuring year-round comfort. Step outside, and you'll be welcomed by a beautiful outdoor space featuring a swimming pool, two elegant fountains, and a circular water feature that enhances the serene atmosphere. Additional amenities include a toilet and shower room, a work shed, and a large multi-use room that can be adapted to suit various needs. Enjoy the outdoor living with a glass summer veranda, which boasts a small kitchen and bathroom, as well as a BBQ area – perfect for entertaining. For even more privacy, there are 2 separate apartments with a bedroom, bathroom with shower, and kitchen – ideal for guests or staff. A roof terrace with a small glass room offers yet another vantage point from which to enjoy the stunning surroundings. The estate also includes a garage with space for up to three cars. This property presents a once-in-a-lifetime opportunity – whether you envision transforming it into a grand mansion, a boutique hotel, a B&B, or any other creation, the possibilities are endless. While it is a total renovation project, its sheer potential makes it well worth the visit. Don't miss the chance to explore this exceptional estate. Nestled in the prestigious residential area of Torremuelle, this magnificent estate offers the perfect balance of tranquility and convenience. Surrounded by breathtaking panoramic views, the property boasts stunning vistas of the sparkling Mediterranean Sea and the picturesque mountains that define the stunning Costa del Sol landscape. Situated just moments from world-renowned golf courses and the shimmering coastline, you'll have easy access to the best leisure and recreational activities in the area. Whether you're an avid golfer or a lover of the sea, Torremuelle offers the ideal location to enjoy both, with nearby beaches just a short drive away. The residential neighborhood is peaceful and serene, providing a quiet retreat while still being within reach of all the vibrant amenities that Benalmádena and the Costa del Sol offer. From fine dining and shopping to cultural experiences and entertainment, everything you need is just a stone's throw away, making this location a true gem for those seeking a luxurious yet accessible lifestyle. Whether you wish to relax and enjoy the natural beauty surrounding you or explore the nearby attractions, the location of this property truly offers the best of both worlds.



Features:

Features

Covered Terrace
 Near Transport
 Private Terrace
 Storage Room
 Ensuite Bathroom
 Marble Flooring
 Double Glazing
 Fitted Wardrobes
 Solarium
 WiFi
 Guest Apartment
 Utility Room
 Barbeque

Views

Sea
 Mountain
 Panoramic
 Garden
 Pool

Pool

Private

Garden

Private

Utilities

Electricity

Orientation

South East
 South West

Setting

Urbanisation
 Close To Sea
 Close To Shops
 Close To Town
 Close To Schools
 Suburban

Furniture

Part Furnished

Security

Alarm System

Category

Investment
 Resale

Climate Control

Air Conditioning
 Fireplace

Condition

Renovation Required

Kitchen

Fully Fitted

Parking

Garage