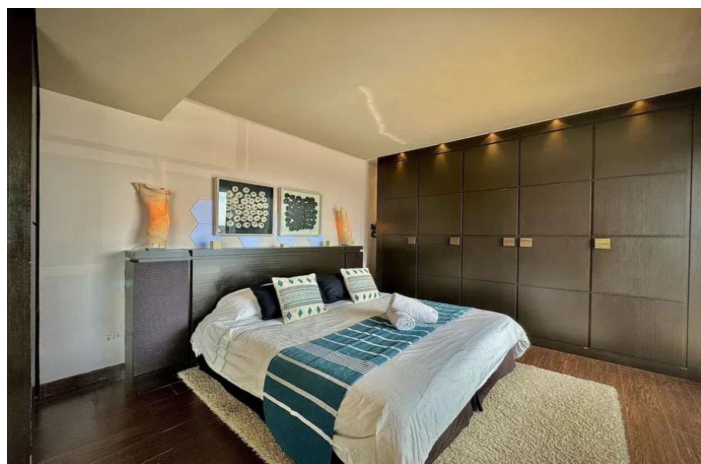
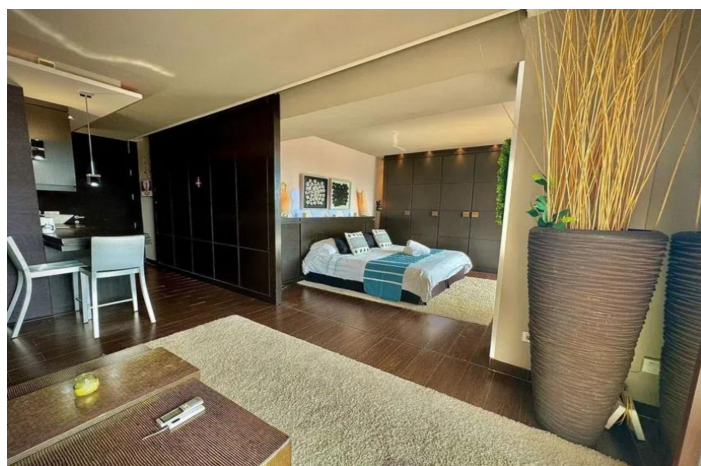




Middle Floor Apartment for sale in Nueva Andalucía, Marbella

275,000 €

Reference: R5298523 Bedrooms: 1 Bathrooms: 1 Build Size: 55m² Terrace: 10m²





Costa del Sol, Nueva Andalucía

Luxury renovated apartment in Nueva Andalucía – 12th floor with panoramic views 📍 Discover this spectacular, completely renovated apartment located in one of Marbella's most sought-after areas, Nueva Andalucía, on the 12th floor offering breathtaking open views of the sea and mountains. The home stands out for its brightness, modern design, and high-quality finishes, ideal as a permanent residence, second home, or investment. Main features: • 12th floor with panoramic sea and mountain views • Fully renovated apartment • Building with concierge service and 24-hour security • Communal swimming pool and large green areas • Community with all services • Quiet and well-maintained environment Unbeatable location: • A few minutes from Puerto Banús, beaches, and golf courses • Close to supermarkets, restaurants, schools, and transport • Excellent connection to the center of Marbella and San Pedro A unique opportunity to live or invest in one of the best areas of the Costa del Sol, combining height, views, comfort, and security. Middle Floor Apartment, Nueva Andalucía, Costa del Sol. 1 Bedroom, 1 Bathroom, Built 55 m², Terrace 10 m². Setting : Close To Shops, Close To Schools, Urbanisation. Orientation : East. Condition : Excellent. Pool : Communal. Climate Control : Air Conditioning, Hot A/C, Cold A/C. Views : Sea, Mountain, Garden. Features : Covered Terrace, Lift, Fitted Wardrobes, Near Transport, Private Terrace, WiFi, Access for people with reduced mobility, 24 Hour Reception, Near Church, Fiber Optic. Furniture : Fully Furnished. Kitchen : Fully Fitted. Garden : Communal. Security : Gated Complex, 24 Hour Security. Parking : Communal. Category : Resale.



Features:

Features

Covered Terrace
Lift
Near Transport
Private Terrace
24 Hour Reception
Fitted Wardrobes
WiFi
Near Church
Fiber Optic
Access for people with reduced mobility

Views

Sea
Mountain
Garden

Pool

Communal

Garden

Communal

Category

Resale

Orientation

East

Setting

Urbanisation
Close To Shops
Close To Schools

Furniture

Fully Furnished

Security

Gated Complex
24 Hour Security

Climate Control

Air Conditioning
Cold A/C
Hot A/C

Condition

Excellent

Kitchen

Fully Fitted

Parking

Communal