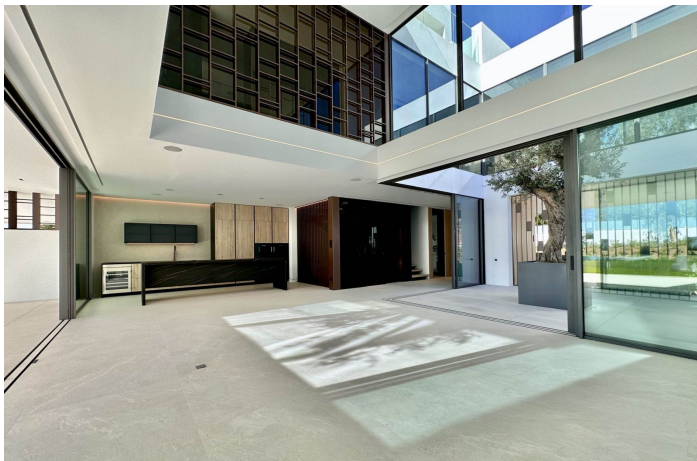




Semi-Detached House for sale in Nueva Andalucía, Marbella

5,250,000 €

Reference: R4749622 Bedrooms: 4 Bathrooms: 5 Plot Size: 154m² Build Size: 442m² Terrace: 235m²





Costa del Sol, Nueva Andalucía

Brand new Villa located in a heart of Nueva Andalucia, Marbella. Walking distance to Puerto Banus and all amenities, close to Aloha Golf Club & Las Brisas Golf Club, and just 1,5 km from the beach. Houses were built in 2024. The residential is completely gated and private, counting with a spectacular entrance, which gives access to 6 impressive "Vilas" with state-of-the-art design. Within the entrance we can find the reception and the security guard post. The extensive outdoor spaces and gardens around the "Vilas", give way to a new concept of swimming pool of almost 180 m2 plus a 36 m2 children's pool, both with chlorination water treatment. The beautifully built Villa on 4 levels offers high quality, stylish and bright living room open to the large and elegant terrace. All 3 bedroom suites include floor-to-ceiling windows, a sleek minimalist kitchen. All 4 levels are connected by a modern elevator. Terraces leading out to a private area of garden – as well as having access to the beautifully landscaped communal gardens and swimming pool. Roof terrace with private swimming pool and outdoor cinema. A customizable basement provides ample space for a home gym, an additional bedroom or room for any other use, such as an office. Villa 6.2 has a parking space for 4 cars within the communal underground parking area. Due to its orientation and position, the entire complex enjoys natural light most of the day, and Villa is completely filled of luminosity through its incredible windows as well as through the "Central courtyard". It is also a fact that the residents will be able to enjoy the most incredible sunrises and sunsets from the spacious terraces.



Features:

Features

Covered Terrace
 Lift
 Near Transport
 Double Glazing
 24 Hour Reception
 Fitted Wardrobes
 Solarium
 Utility Room
 Domotics
 Basement

Setting

Commercial Area
 Close To Golf
 Close To Port
 Urbanisation
 Close To Sea
 Close To Shops
 Close To Town
 Close To Schools

Furniture

Not Furnished

Security

Gated Complex
 24 Hour Security

Orientation

South West

Condition

Excellent
 New Construction

Kitchen

Fully Fitted

Parking

Underground
 Private
 More Than One

Climate Control

Air Conditioning
 U/F Heating

Pool

Communal
 Heated
 Private
 Children`s Pool

Garden

Communal
 Private
Category
 Holiday Homes
 Investment
 Bargain
 Golf
 Luxury
 Resale
 Contemporary